



Eurostars Berlin 1998 - SAM 325 backstops with shot clocks and shot clock supports

1. Possesion indicator

For basketball. Made to meet the demands of big tournaments. Optional the four-sided S13.NS265 witch also shows team fouls. Article: S13.NS260



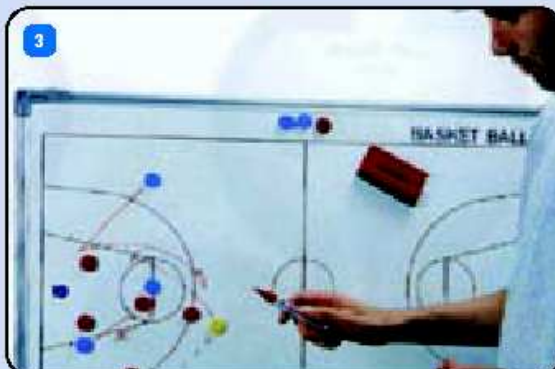
2. Possesion indicator

Budget model. Battery operated. Article: S13.POSIND



3. Tactics board

Magnetic wallboard, full playfield with pawns, marker and eraser. Article: S6.S2068



Shotclock draagbeugels

Hinged steel single post support with brace to backboard frame. U-shaped bracket to suit Schelde shot clocks. Per pair.

For Schelde shot clocks

dim. H 332 x W 435 x D 100mm.
Article: S6.S0554

For Schelde shot clocks

dim. H 562 x W 625 x D 100mm.
Article: S6.S0555

For Schelde shot clocks

dim. H 702 x W 760 x D 100mm.
Article: S6.S0557

For Schelde 3-sided shot clocks

with 24sec shot clocks and game clock.
H 562 x W 700 x D 600mm.
Article: S6.S0556

For non-Schelde shot clocks.

Hinged post with brace and mounting plate, for bolting on non-Schelde shot clock. Per pair.

Article: S6.S0560

Custom models also available e.g. for use on suspended backstops.

Basketball backboards

Framed competition glass backboard 180 x 105cm

1. 12mm tempered glass taken in white enamelled steel frame. Official FIBA model, with cut-out for ring fixation. Strong ring mounting plate as integral part of the frame. Designed for 'direct mount' on main beam of backstop support structure. No contact between ring and glass: so called 'glass-free ring attachment'. Per unit. Patent, no. 6053826.

Article: S6.S2000

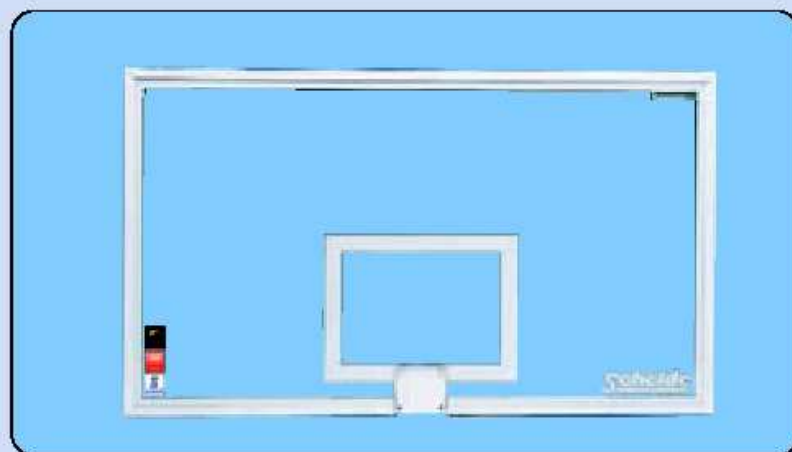
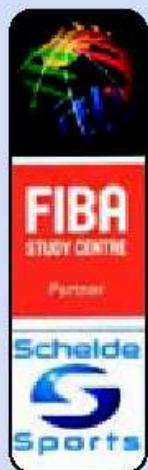
2. Like S6.S2000, however fitted with centre strut, connecting top and bottom frame members, for added rigidity. Designed for backstop support structures that have no main beam to connect to the ring mounting plate (e.g. wall-mounted structures, ceiling-suspended support-frame). Frame is equipped with mounting holes at the 4 corners. Per unit.

Article: S6.S2000CS

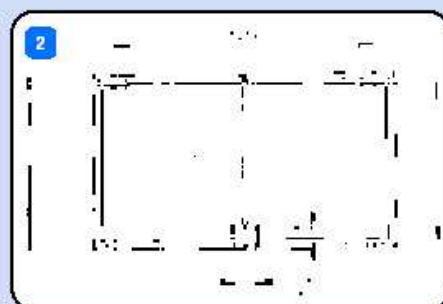
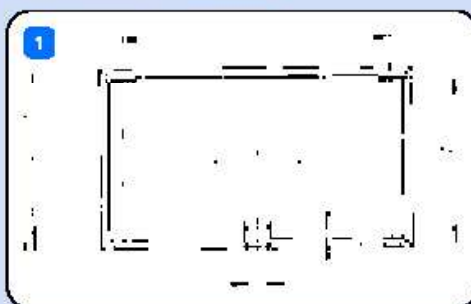
8mm glass backboard (not pictured)

As S6.S2000 however thickness is 8mm.

Article: S6.S1960



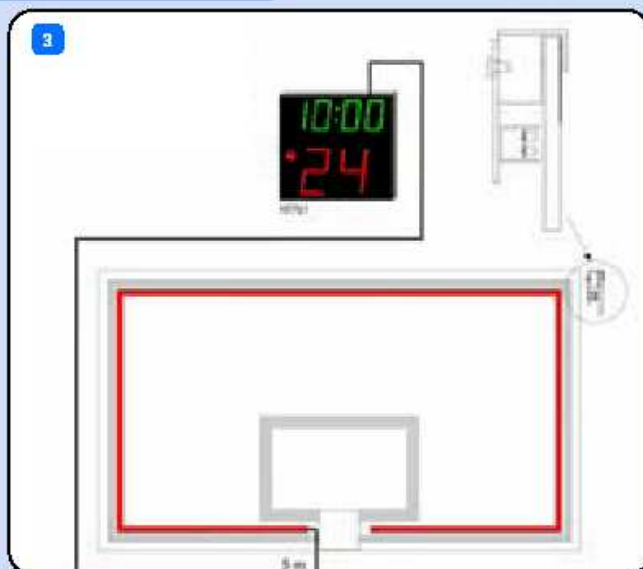
Direct mount ring design. No glass behind the plate and no bolts pass through the glass, so that dunks don't stress the glass at all.



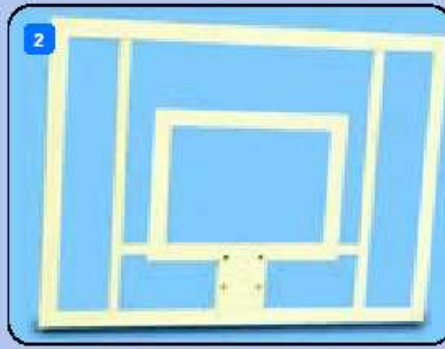
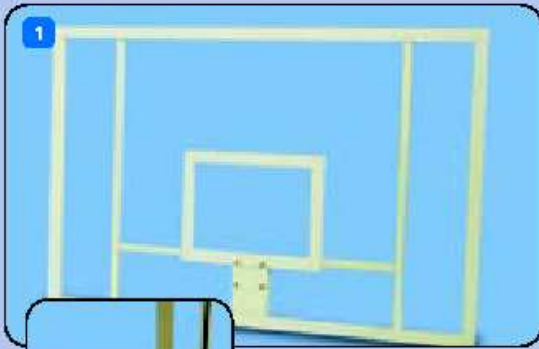
3. LED-strip

For FIBA level 1 competitions every basketball board needs to be fitted with a LED-strip, mounted on the backside of the board. The lights go on when the gameclock signals the end of a period.

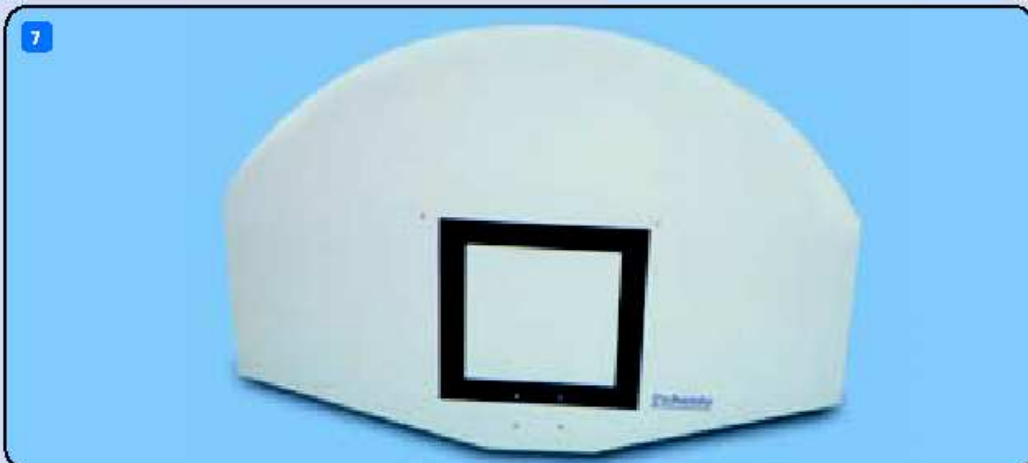
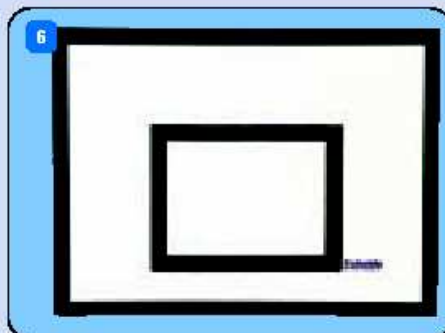
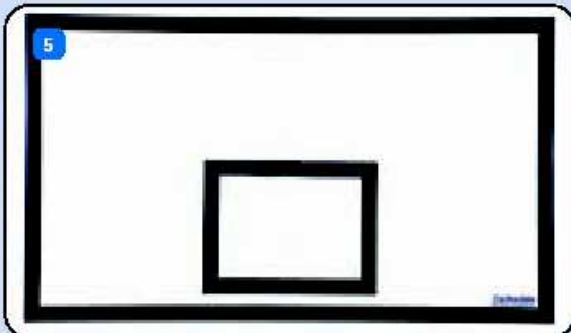
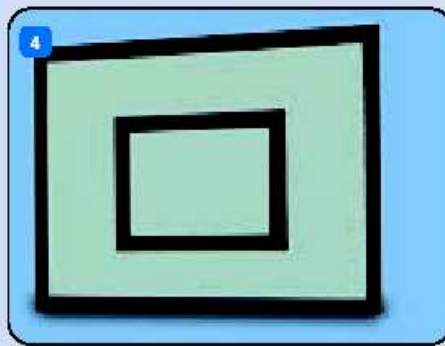
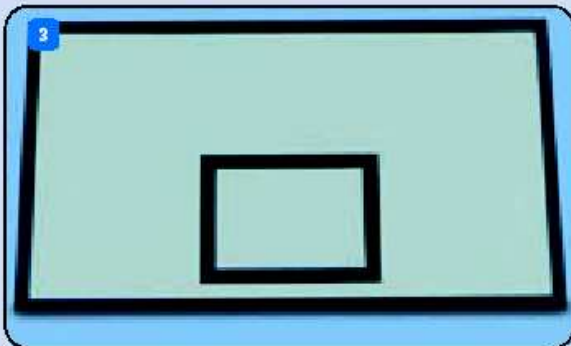
Article: S13.NT266



Basketball backboards



Slotted rails in steel frame for precise height adjustment.



1. Acrylic backboard

See-through 10mm acrylic backboard 180 x 105cm, mounted on white enamelled double steel frame. With oversized holes and strong ring mounting plate attached to the outer frame. Per unit.

Article: S6.S2015SF

2. Acrylic backboard

See-through 10mm acrylic backboard 120 x 90cm, mounted on white enamelled steel frame. Per unit.

Article: S6.S2014F

Acrylic backboard

Replacement backboard 10mm see-through acrylic, without frame; dim. 180 x 105cm. Per unit.

Article: S6.S2015S

Acrylic backboard

Replacement backboard 10mm see-through acrylic, without frame; dim. 120 x 90cm. Per unit.

Article: S6.S2014

3. Fibreglass backboard, rectangular

180 x 105cm, thickness 22mm. Plywood core enveloped in white polyester. Black lines. Per unit.

Article: S6.S2004

4. Fibreglass backboard, rectangular

120 x 90cm, thickness 22mm. Plywood core enveloped in white polyester. Black lines. Per unit.

Article: S6.S2007

5. Wooden backboard, rectangular

180 x 105cm, thickness 20mm. Finnish birch plywood, white enamel finish with black lines. Per unit.

Article: S6.S2002S

6. Wooden backboard, rectangular

120 x 90cm, thickness 20mm. Finnish birch plywood, white enamel finish with black lines. Per unit.

Article: S6.S2003

7. Fibreglass backboard, fan-shaped

120 x 90cm, thickness 22mm. Plywood core enveloped in white polyester. Per unit.

Article: S6.S2005

Plywood backboards not recommended for outdoor environment

Basketball rings

Pro Strength collapsible goal

FIBA top competition level approved. Solid steel ring, fully enclosed die-cast spring with a positive latch system. No bolts or complicated linkage that can wear out or cause the goal to misalign. Adjustable breakaway force, pre-set to FIBA rules. Tube-tie net system (no hooks) for maximum player safety. Fixing hole pattern 127 x 104mm. Designed for direct-mount on Schelde's competition glass backboard (S6.S2000 / S6.S2000CS). Per unit.

Article: S6.S2026

1a. Pro Strength collapsible goal

Like S6.S2026 however bore hole pattern adapted to suit DIN pattern 110 x 90mm. Per unit.

Article: S6.S2026A

1b. Pro Strength collapsible goal

Like S6.S2026 however bore hole pattern adapted to suit custom mounting pattern, please specify. Per unit.

Article: S6.S2026B

1c. Pro Strength collapsible goal

Like S6.S2026 however for installation on other than Schelde glass backboard; bore hole pattern 102 x 127mm.

Article: S6.S2026C

2. Pro Action 180° dunk ring (new)

Patented FIBA and NCAA (USA) top competition level dunk ring, with adjustable "positive locking mechanism" net fixing without hooks. Multi-directional breakaway ring. 3 Years guarantee.

Article: S6.S2025

2a. Pro-Action 180° dunkring

Like S6.S2025 however bore hole pattern adapted to suit DIN pattern 110 x 90mm. Per unit.

Article: S6.S2025A

2b. Pro-Action 180° dunkring

Like S6.S2025 however bore hole pattern adapted to suit custom mounting pattern, please specify. Per unit.

Article: S6.S2025B

2c. Pro-Action 180° dunkring

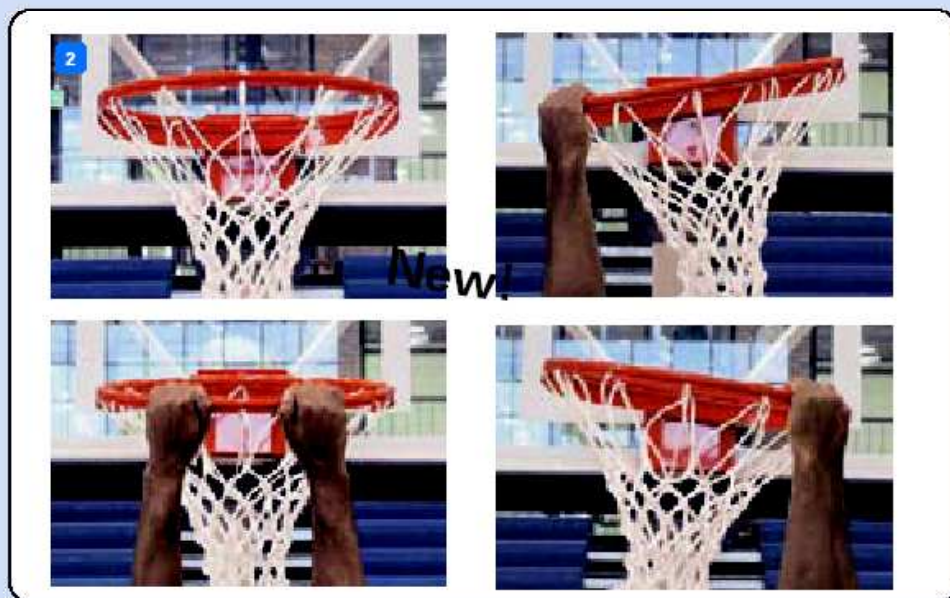
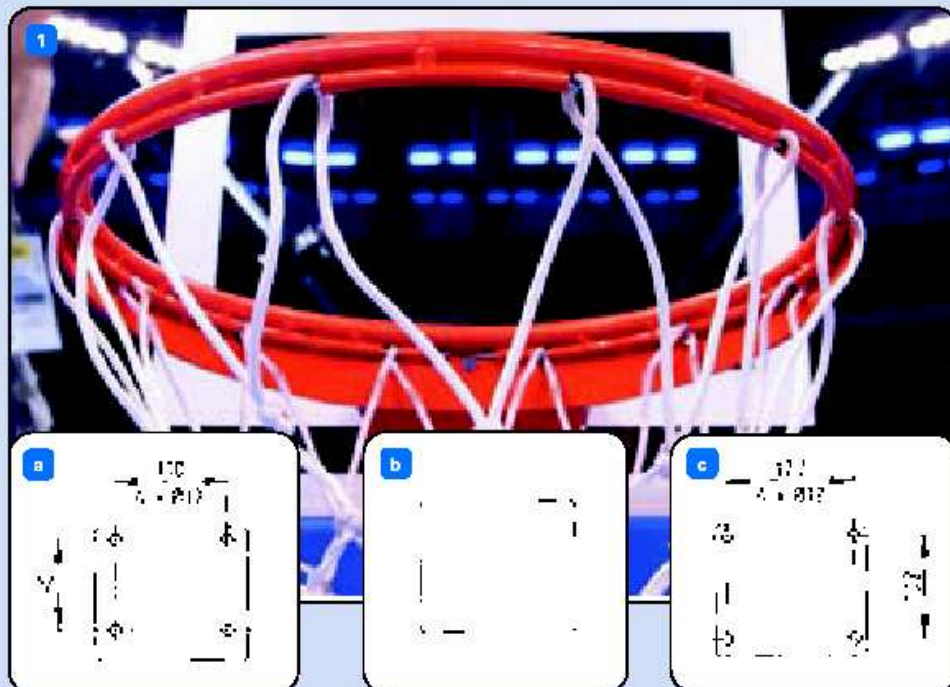
Like S6.S2025 however for installation on other than Schelde glass backboard; bore hole pattern 102 x 127mm.

Article: S6.S2025C

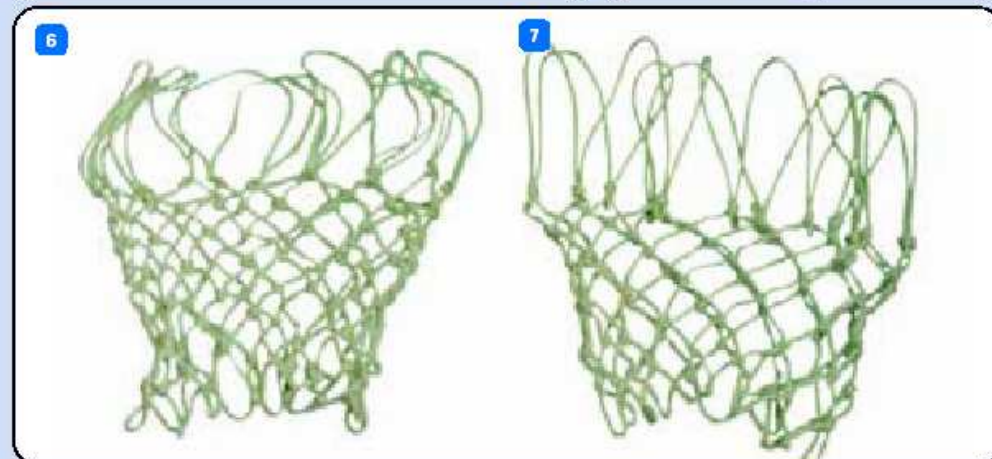
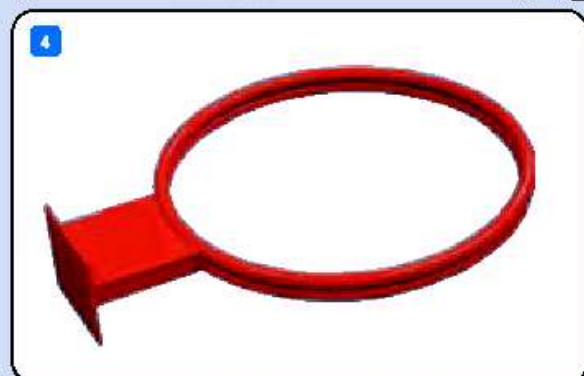
3. Breakaway ring

For recreational use, 16mm tube with wrap around support. Two fully enclosed 33mm rubber grommets ensure automatic return of the ring. Powder coated finish. Inclusive of hardware.

Article: S6.S2022



Basketball rings/nets



1. Fixed ring

According to FIBA rules; non-collapsible. Solid steel ring, support rods and mounting plate. DIN hole pattern 110 x 90mm. Per unit.
Article: S6.S2020

2. Fixed ring

Like S6.S2020, however equipped with flip-up feature which allows the ring to store flat against the backboard. Per unit.
Article: S6.S2021

Fixed ring (not pictured)

Like S6.S2020, however easily removable by means of slide-in mounting plate. Per unit.
Article: S6.S2026

3. Set-up ring

For school use; Ø 60cm. Attaches to regular ring by means of velcro fasteners. Per unit.
Article: S6.S2023

4. Antivandalism ring

Reinforced double ring, no net hooks. Per unit.
Article: S6.S2029

5. Counterplate for ring

For use with boards which are not directly attached on a central beam.

Basketball nets

6. Antiwhip basketball net

Made of white nylon 16 braided, 12 stiff loops x 5 knots x 45cm length.
Article: S6.S2031

7. Basketball net

Made of white nylon 32 braided, 12 loops x 5 knots x 45cm length.
Article: S6.S2030

8. Basketball net

Heavy model, 12 loops, length 45cm.
Article: S6.S2027

Backboard Padding

For Schelde glass backboards:

Bolt-on top competition system, comprised of:

- a foam body glued to metal channel, which is bolted to the backboard frame;
- a removable and washable lycra sock, which protects foam from sagging and from being damaged.

1. Double sided foam

factory glued to metal channel, fitted with mounting bolts; per unit.

Article: S6.S2013

2. Lycra sock

Blue colour, for protecting S6.S2013. Slips over foam and channel. Ends close with velcro patches. Eliminates foam deterioration and sagging. Other colours available upon request. Per unit.

Article: S6.S2011

For non-glass backboards 180 x 105cm

3. Blue PE. foam, with metal strip, for bolting on acrylic board.

Article: S6.S2010

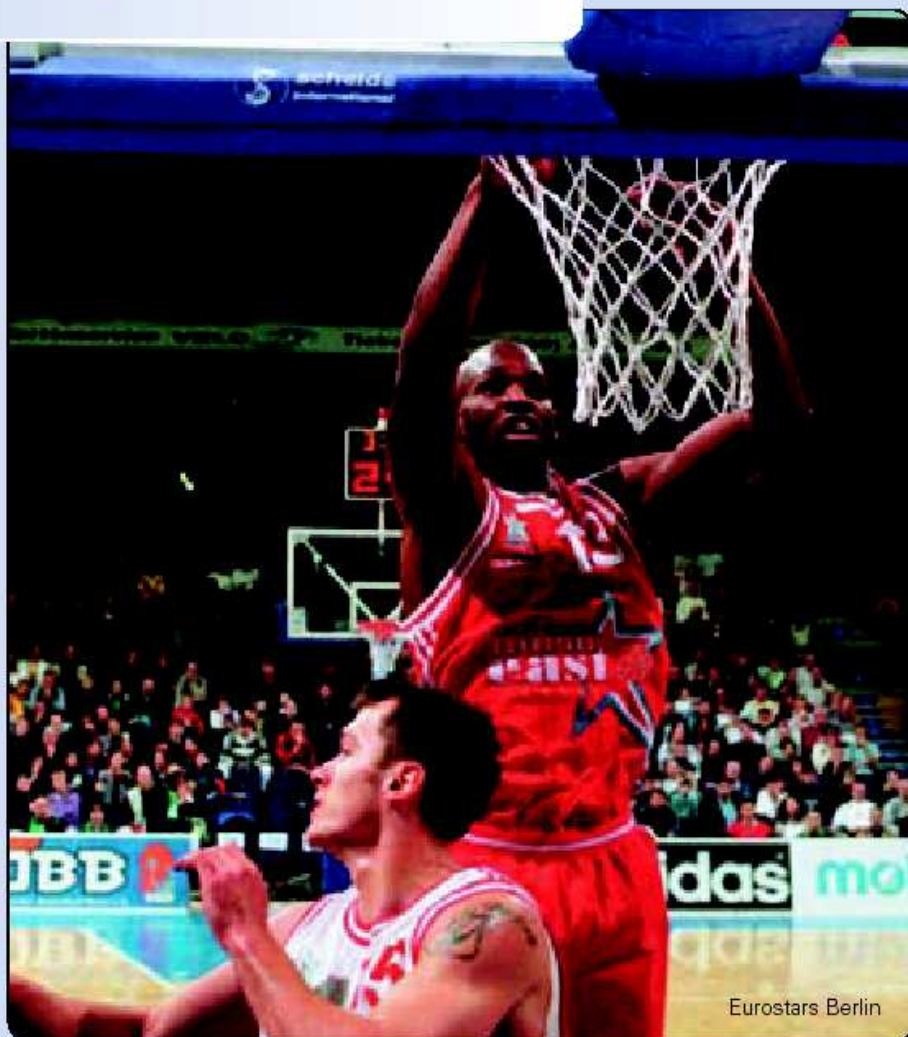
With 24mm wide slot for fibreglass backboard. Glue-on foam included.

Article: S6.S2008

With 20mm wide slot for wood backboard.

Glue-on foam included.

Article: S6.S2009



Eurostars Berlin

